



HIDE Skimmer Lid

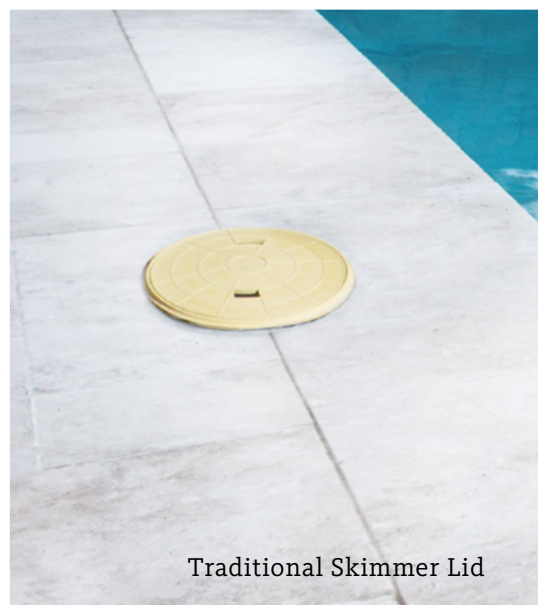


**SAFE.
SEAMLESS.
STUNNING.**

**Sophisticated, seamless covers that
disappear into your landscape.**

HIDE's innovative lids for skimmer boxes, access points, drains and wet-pour concrete applications are available in a range of sizes to suit most applications where a sophisticated upmarket finish is required.

HIDE lids are designed to carry your selection of tiles, timber or concrete to match the pool surrounds, creating a luxurious, uninterrupted outdoor space.



Traditional Skimmer Lid



PROUDLY MANUFACTURED BY:
SKIMMER LIDS
PTY LTD



*Integrated
pattern!*

AFTER HIDE.

**SAFE.
SEAMLESS.
STUNNING.**

A new breed of skimmer lid reinventing the poolscape.

HIDE lids are readily installed in new poolscapes or when refurbishing existing landscapes.

Our design allows for easy and affordable installation, on-site by a contractor.

Every kit contains all the components for a no-fuss assembly, resulting in the homeowner having a safe and seamless finish.



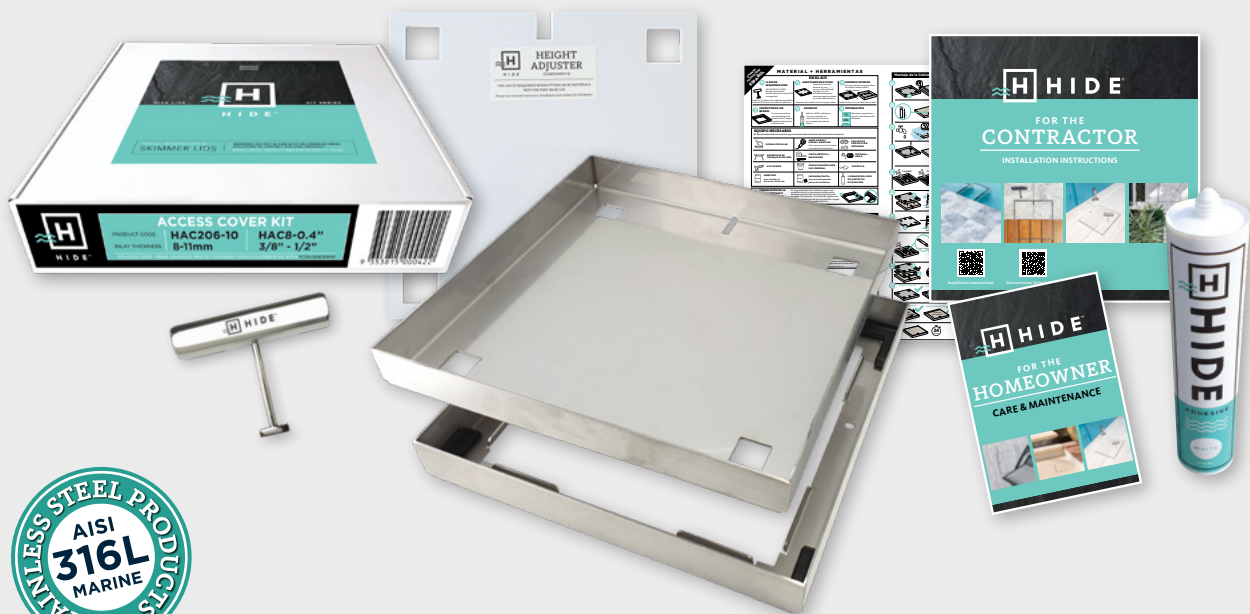
BEFORE HIDE.



HIDE Skimmer Lid (HSL306-30)

HIDE KIT SERIES

SKIMMER LID / ACCESS COVER





ELEGANT
FINISH


HIGH
GRADE


EASY
INSTALL


10 YEAR
WARRANTY


POOL
SAFE

HIDE SKIMMER LID KIT INCLUDES

SAFETY KEY

A 316L marine grade stainless steel tool, to enable the installed HIDE cover to be safely and easily opened and closed.

HEIGHT ADJUSTER

Used only when additional height is required. Provides 2mm extra height if inlay material is not thick enough to achieve a flush finish with the top of the Inlay Cover.

INLAY LID

A 316L marine grade stainless steel tray which holds the inlay (landscape) materials you've chosen, for example, tile, paver, concrete or decking.

EDGE PROTECTOR

A 316L marine grade stainless steel frame inserted into a recess within the landscaped area. It protects the coping/surrounds from chipping/breakage when the Inlay Cover is opened/closed.

ADHESIVE AND DOCUMENTATION

A one-part adhesive specially developed for a long-term fitting of natural stone and porcelain tiles into the HIDE Inlay Series. Documents consist of comprehensive contractor installation instructions, homeowners warranty and manual.

NO ACID / CHEMICAL WASH

ACID and chemical washes will cause discolouration and/or rusting on the stainless steel HIDE components. Acid or chemical contact will void the HIDE warranty.

The skimmer box cover - frame, lid and key product contained herein is covered by Int. Appln PCT/AU2018/000149
The skimmer box cover - frame and lid product contained herein is covered by AU Reg Design 201813786 AND 20183789.



HIDE Concrete Lid



HIDE Skimmer Lid Concrete (HSL342-40)

**THE
CHOICE.
IS CLEAR.**

HIDE Concrete Skimmer Lids and Access Covers, utilise a specially designed Edge Protector which provides the perfect reinforcement for a wet-pour concrete.

The HIDE Concrete kit is filled and finished at the same time as the landscape surrounds, ensuring the lid perfectly matches the selected surface finish in both texture and colour.

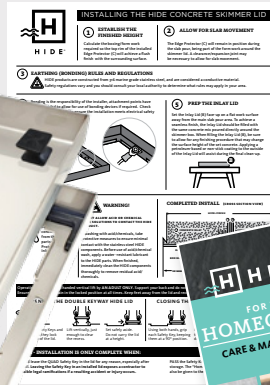
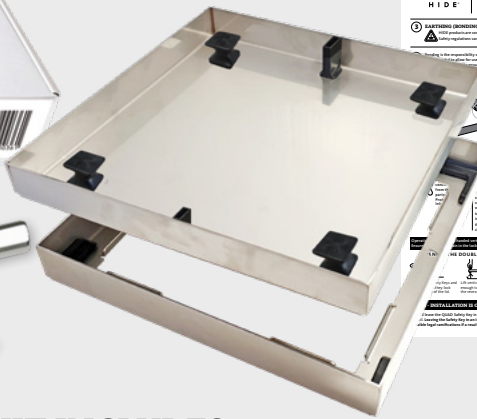
If you want to finish your pool surrounds in decorative concrete, this is the product for you!



HIDE Access Cover Concrete (HAC342-40)

HIDE KIT SERIES

CONCRETE



HIDE CONCRETE COVER KIT INCLUDES

SAFETY KEYS

A 316L marine grade stainless steel tool, to enable the installed HIDE cover to be safely and easily opened and closed.

INLAY LID

A 316L marine grade stainless steel tray which holds the inlay (landscape) materials you've chosen, for example, tile, paver, concrete or decking.

All HIDE Kits 40, 50, 60mm in depth are supplied with two keys and lugs and are suitable for any combination of concrete, tile, stone or paver installations. (See last page for 50 & 60mm depth kits)

All HIDE Kits 10, 20, 30mm in depth are single key products and not suitable for concrete applications.

EDGE PROTECTOR

A 316L marine grade stainless steel frame inserted into a recess within the landscaped area. It protects the coping/surrounds from chipping/breakage when the Inlay Cover is opened/closed.

DOCUMENTATION

Documents consist of comprehensive contractor installation instructions, homeowners manual and warranty.

NO ACID / CHEMICAL WASH


ACID and chemical washes will cause discolouration and/or rusting on the stainless steel HIDE components. Acid or chemical contact will void the HIDE warranty.


ELEGANT
FINISH


HIGH
GRADE


EASY
INSTALL


10 YEAR
WARRANTY


POOL
SAFE

CONCRETE Cover Range

KIT SIZE	HIDE KIT	CONCRETE THICKNESS	INLAY LID		EDGE PROTECTOR FRAME		
			SIZE	INTERNAL DEPTH	SIZE	EXTERNAL DEPTH	UNDERSIDE OPENING
mm	PRODUCT ORDER CODE	mm					
	A	B	C	D	E	F	G
156	HCON156-40	42	150 sq.	42	156 sq.	47	122 sq.
206	HCON206-40		200 sq.		206 sq.		162 sq.
256	HCON256-40		250 sq.		256 sq.		202 sq.
306	HCON306-40		300 sq.		306 sq.		252 sq.
342	HCON342-40		336 sq.		342 sq.		288 sq.

HIDE products are recommended for use in pedestrian traffic areas only.

Information correct at time of printing, changes may be made without notice. Modifications and updates can be viewed on our website - www.skimmerlids.com

HIDE Access Cover

As with all HIDE products, the Access Cover is designed to carry your selection of landscaping material to match the surrounds, allowing the lid to blend seamlessly into your outdoor area.

HIDE Access Covers are available in a selection of sizes and depths.

Access covers provide easy entry to service points such as:

- drain waste vent (DWV)
- water table pipe
- water and balance tanks
- taps and irrigation
- valves and meters
- electrical junction box

HIDE recommends its products for use in pedestrian traffic areas only.

HIDE recommends discussing the use of an access cover with your project manager at the beginning of new landscape design.

HIDE Access Cover (HSL306-40)

HIDE Drain covers allow for your chosen landscape material to seamlessly conceal the drain access, resulting in a visually appealing and discreet service cover.

HIDE Drain Cover Kits are designed to suit a water intake compatible with a standard 90mm or 100mm drainage network, providing superior safety and performance.

Consult your drain layer for site water flow requirements.

HIDE recommends its products for use in pedestrian traffic areas only.

HIDE Drain Cover

314mm Drain Cover Kit

HIDE KIT	MATERIAL THICKNESS	INLAY LID		EDGE PROTECTOR FRAME		
PRODUCT ORDER CODE	mm	SIZE	INTERNAL DEPTH	SIZE	EXTERNAL DEPTH	UNDERSIDE OPENING
A	B	C	D	E	F	G
HDC314-10	8-11	300 sq.	12	314 sq.	23	220 sq.
HDC314-20	15-22		23		33	
HDC314-30	25-32		33		43	
HDC314-40	35-42		43		53	
DRAIN COVER CONCRETE WET-POUR						
HDCON314-40	43	300 sq.	43	314 sq.	53	220 sq.

SAFETY KEY

- The Safety Key is used to operate all HIDE lids/covers.
- To prevent children accessing the skimmer box, always store the Safety Key out of the reach of children, in a secure location.
- NEVER leave the Safety Key in the lid for any reason. The key is not specified or designed to remain in the lid.
- NEVER carry the full weight of the lid with the Safety Key. Using the key as a handle may damage it and will void your warranty.
- The Key is also constructed from 316 marine grade stainless steel, and is replaceable with proof of purchase.



New Pool - Allow for depth of Recess Frame

MUCH MORE TO LOVE

HIDE's beautiful, streamlined finish is an absolute hit with homeowners. The HIDE design also features these major benefits:



ELEGANT FINISH

A totally integrated + flush finish means HIDE lids are essentially invisible.



EASY USE

HIDE lids are compact, and super easy to use.



LONG LIFE

Protect the inlay materials from chipping or breaking for the life of the pool.



HIGH GRADE

316L marine grade stainless steel frames + 10 year warranty!



POOL SAFE

100% compliant with Pool Safety standards.



GOOD PRICE

HIDE kits represent excellent value for money.



Existing Pool - Position the Edge Protector



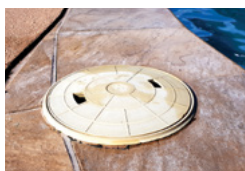
Existing Pool - Measure and cut to install

Not all Skimmer Lids were created equal.

Traditional skimmer lid options have plenty of quality and safety concerns, which can cause serious headaches for homeowners and contractors alike. What's worse, is that many don't even meet relevant Pool Safety Standards!

TRADITIONAL PLASTIC OPTION

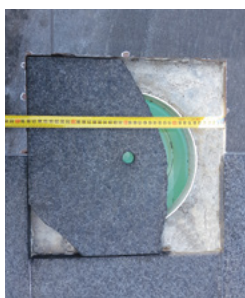
A cheap, plastic lid which is unsightly and requires regular replacement due to sun damage and wear.



LOOSE STONE/TILE OPTION

A brittle option which is often short-lived and quickly becomes unattractive due to damage. Loose stone usually breaks/chips quickly, or causes chipping or damage to the surrounding stone and requires constant repair.

A loose stone is often NOT compliant or POOL SAFE.



HIDE Skimmer Lid (HSL342-40)

HIDE is your superior alternative to unsightly plastic/loose stone lids.

Skimmer & Access Cover Kits

HIDE KIT	MATERIAL THICKNESS	INLAY LID		EDGE PROTECTOR FRAME		
PRODUCT ORDER CODE	mm	SIZE	INTERNAL DEPTH	SIZE	EXTERNAL DEPTH	UNDERSIDE OPENING

156mm Access Cover Kit

A	B	C	D	E	F	G
HAC156-10	8-11	150 sq.	12	156 sq.	23	120 sq.
HAC156-20	15-22		23		33	
HAC156-30	25-32		33		43	
HAC156-40	35-42		43		53	
HAC156-50	45-52		53		63	
HAC156-60	55-62		63		73	

206mm Access Cover Kit

HAC206-10	8-11	196 sq.	12	206 sq.	23	162 sq.
HAC206-20	15-22		23		33	
HAC206-30	25-32		33		43	
HAC206-40	35-42		43		53	
HAC206-50	45-52		53		63	
HAC206-60	55-62		63		73	

256mm Access Cover Kit

HAC256-10	8-11	250 sq.	12	256 sq.	23	222 sq.
HAC256-20	15-22		23		33	
HAC256-30	25-32		33		43	
HAC256-40	35-42		43		53	
HAC256-50	45-52		53		63	
HAC256-60	55-62		63		73	

306mm Skimmer and Access Cover Kit

HSL306-10	8-11	300 sq.	12	306 sq.	23	252 sq.
HSL306-20	15-22		23		33	
HSL306-30	25-32		33		43	
HSL306-40	35-42		43		53	
HSL306-50	45-52		53		63	
HSL306-60	55-62		63		73	

342mm Skimmer and Access Cover Kit

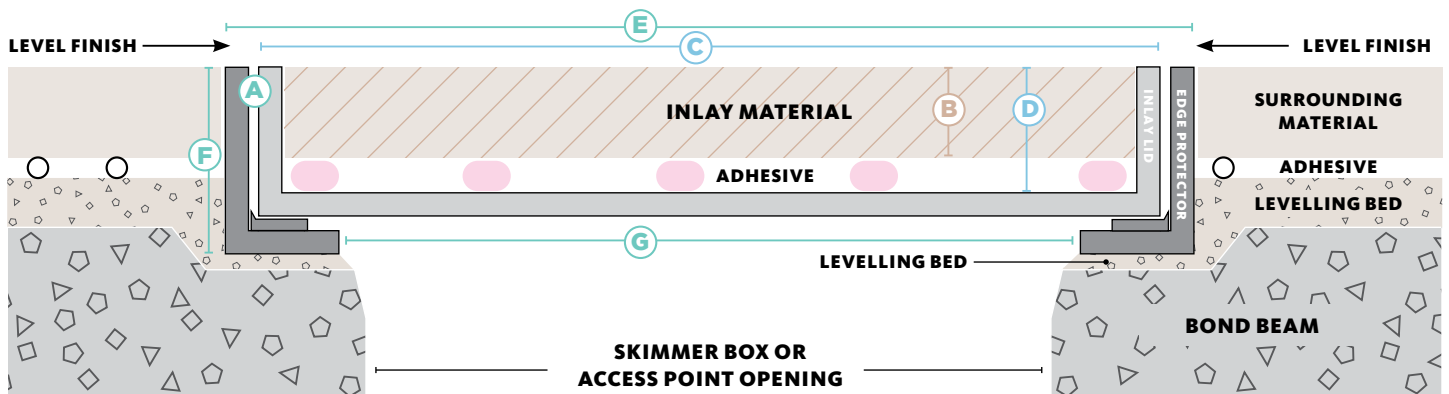
HSL342-10	8-11	336 sq.	12	342 sq.	23	288 sq.
HSL342-15	12-16		18		28	
HSL342-20	15-22		23		33	
HSL342-30	25-32		33		43	
HSL342-40	35-42		43		53	
HSL342-50	45-52		53		63	
HSL342-60	55-62		63		73	

506mm Access Cover Kit

HAC506-20	15-22	500 sq.	23	506 sq.	33	452
-----------	-------	---------	----	---------	----	-----

656mm Access Cover Kit

HAC656-20	15-22	650 sq.	23	656 sq.	33	602
-----------	-------	---------	----	---------	----	-----



HIDE products are recommended for use in pedestrian traffic areas only. Information correct at time of printing, changes may be made without notice.

Modifications and updates can be viewed on our website: www.skimmerlids.com.au

Our manufacturing process allows us to custom make sizes to suit most applications. Please call for more information.



OFFICE
Unit 3/26 Octal Street,
Yatala, Qld, 4207
Australia

P: 07 3807 2551
M: 0427 270 560
E: admin@skimmerlids.com.au
W: www.skimmerlids.com.au

PROUDLY MANUFACTURED BY:

SKIMMER LIDS
PTY LTD

[f](https://www.facebook.com/skimmerlids) [p](https://www.pinterest.com/skimmerlids) [i](https://www.instagram.com/skimmerlids) [y](https://www.youtube.com/skimmerlids) @hideskimmerlids